



**Bio-Medica**  
Laboratories Limited

Suppliers of Herbicides, Fungicides, Insecticides, Miticides,  
Foliar feeds, Knapsack sprayers, Citric acid, Industrial and  
Water treatment chemicals

## PRODUCT CATALOGUE



*In partnership with farmers*

**Dakota<sup>®</sup> 50FW**

**FAGILIA<sup>®</sup>**

Glyphosate 48% SL

**Biothane<sup>®</sup> 80WP**

**SPEAR 325 SC**

**AMIDOFA 250SC**

**ALPHAMED 100EC**

**ZINC-B**

**DeAcarid<sup>®</sup> 1.8EC**

**RUBIPRID 200 SP**

**MEGA-GRO G/A<sup>®</sup>**

**DUALIS 2EC**

**BIOMAN<sup>®</sup>**

**BIOBOOM**

**DEMILDEX<sup>®</sup> 50WP**

**BIO-2, 4-D 720SL**

**FLYEE 72% WP**

**GROFLOW FOLIAR**

**Agri.Green**

**ZincFlo<sup>®</sup> Zn 70**



**Bio-Medica**  
Laboratories Limited

## OUR MISSION

Our mission is to deliver high quality affordable agrochemicals, cereal milling and baking enzymes, industrial and water treatment chemicals to our consumers in sub-Saharan Africa while exceeding our customers' service expectations.

**Bio-Medica provides a wide range of quality agrochemicals and inputs, in our endeavour to partner with farmers for improved agricultural yields, environmental conservation and sustainable farming.**



## Our range of products include:-

Herbicides, fungicides, insecticides, miticides, biological pesticides, foliar feeds, knapsack sprayers, wheat flour improvers, milk culture, meat and milk testing kits, industrial and water treatment chemicals.

## HERBICIDES

# FAGILIA®

## Glyphosate 48% SL



**Rates of use:-**

Weeds	Application rate per hectare	Rate per 20lt water
Annual weeds	1.5 litres	150-300ml
Perennial weeds	2.5 litres	250-500ml
Hard to kill perennials	4 litres	400-500ml

**Use 200 Litres of water per hectare.**

**Available:** 200ml, 500ml, 1ltr, 5ltr, 20ltr

**FAGILIA 48% SL** is a systemic non-selective weedkiller used in the control of annual, biannual and perennial weeds, grasses and sedges. It is a post emergency herbicide with a wide spectrum of control and can be used in plantation crops, grassland, zero-minimum tillage and non-crop areas.

### For best results

**FAGILIA 48% SL** should be applied when rains are not likely to fall within 6-8 hours of

application. Weeds should be applied when they have a full emergency of healthy and actively growing leaves and before flowering or seeding. Avoid windy conditions since drift onto non-target areas can result in serious injury or destruction.

Measure the required amount of **FAGILIA 48% SL** and mix with a little amount of water and stir. Add the remaining volume of water and continue stirring.

GLYFOSAT®, FAGILIA® and Bio-Medica® are registered trademarks of Bio-Medica Laboratories Limited

## BIO-2, 4-D 720SL

### 2,4-D Dimethylamine 720g/l

### GENERAL INFORMATION

BIO-2, 4-D is a selective weed killer for the control of broad leaf weeds in babycorn, maize, wheat, barley and oats. It is suitable for application by aircraft, tractor and knapsack sprayers. BIO-2,4-D should be diluted with water before use.



### DIRECTIONS FOR USE

RATES	TIMING OF APPLICATION
<b>Post-emergence:</b> 2.5L/Ha in 400L of water or 125ml/20lts of water	Anytime after 2 leaf stage, but before baby corn, or grass seeds crop is 30 cm (12") high. Thereafter apply directional spray between rows. According to application conditions and the growing period remaining between application and harvest, no safety intervals required.

**Available:** 250ml, 500ml, 1ltr, 5ltr, 20ltr

### ADDITIONAL NOTES ON TIMING OF APPLICATION:

Do not spray when rain is imminent or during a period of drought. BIO-2, 4-D should be sprayed when conditions for growth are good and soil moist. Avoid spray drifting onto unintended crops. Livestock should be kept away from sprayed pastures for at least 21 days.

### PREPARATION OF THE SPRAY MIXTURE:

Half-fill the spray tank with water, start agitation and add the required amount of BIO-2, 4-D.

Then fill the tank with water maintaining agitation during the entire mixing and spraying process. Use the spray on the same day of preparation.

### Pre-HARVEST INTERVAL:

According to application conditions and the growing period remaining between application and harvest, no safety interval is required.

BIO-2, 4-D 720SL® and Bio-Medica® are registered trademark of Bio-Medica Laboratories.



## FUNGICIDES

# Dakota® 50FW

Chlorotharlonil

Dakota 50FW is a broad spectrum contact fungicide effective for the control of fungal diseases on coffee, fruits, vegetables and ornamentals. For best results Dakota 50FW must be present on the plant before the onset of infection.



### DIRECTION FOR USE

Compatibility:- Dakota 50FW is compatible in a tank-mix with most commonly used pesticides but concentrates should never be mixed together. Half fill the spray tank with clean water then add the required amount of Dakota 50FW. Agitate this mixture then fill the tank with water and agitate thoroughly. Spray and ensure complete coverage.

### DOSAGE RATES

Crop	Disease	Application rate per 20litres	Application rate per hectare	Spraying volume per hectare	Maximum spraying frequency
Coffee	Coffee berry disease	70ml	3.5 Litres	960 Litres	Once per month
Tomato	Blight	100ml	1 Litre	150 Litres	7 times per season
Cabbage	Dark Leaf spot	100ml	0.8 Litres	120 Litres	5 times per season
Tobacco	Leaf spot	40ml	1.2 Litres	600 Litres	2 times per month
Chili	Blight	100ml	3.4 Litres	690 Litres	3 times per month
Roses	Botrytis	60ml	3.0 Litres	1000 Litres	3 times per month

Pre-Harvest Interval (P.H.I) - 7 days

**Available:** 250ml, 1Lt, 5lts, 20Lts, 200Lts

Dakota® and BIO-MEDICA® are registered trademarks of Bio-Medica Laboratories Limited

# AMIDOFA 250SC

**Azoxystrobin 250g/l**

**DESCRIPTION:** AMIDOFA 250SC is a broad spectrum contact and systemic fungicide for the control of botrytis, rust, antracnose, angular leaf spot, ascochyta, powdery and downy mildew in roses, carnations, statice, peas and beans.

**MODE OF ACTION:** AMIDOFA 250SC acts by inhibiting spore germination in early stages of fungal development. It is also active against post-germination stages of the life cycle of most fungi.

### APPLICATION RATES

Crop	Disease	Rate/Ha	Rate/20Lt
Roses	Botrytis, Downy mildew	750ml	15ml
Carnations	Rust	750ml	15ml
Brassicas	Powdery mildew	750ml	15ml
Statice	Botrytis	750ml	15ml
French Beans/Peas	Botrytis, Ascochyta, Anthracnose, Rust, Angular leaf spot	750ml	15ml

**Available:** 50ml, 100ml, 250ml, 500ml, 5lts, 20Lts

**PRE-HARVEST INTERVAL:** 14 days in French beans

**RE-ENTRY PERIOD:** 24 hours.

**APPLICATION METHOD:** AMIDOFA 250SC is foliar applied by spraying using 1000 liters of spray mixture per hectare.

**APPLICATION TIMING:** to achieve efficient control, AMIDOFA 250SC should be applied at the onset of disease. Repeat after 10 days and use upto a maximum of 3 times per season.



**PREPARATION OF SPRAY MIXTURE:** Fill spray tank with half the amount of required water. Add required amount of AMIDOFA 250SC and fill the water to the required level. Agitate to ensure thorough mixing.

AMIDOFA® and Bio-Medica® are registered trademark of Bio-Medica Laboratories.

## FUNGICIDES

# DEMILDEX<sup>®</sup> 50WP

Contains Copper Oxychloride

*Not all copper fungicides are the same*

Contains Copper oxychloride 850g/kg  
A protectant copper fungicide with  
bacterial effect

The “Copper solution” for  
outstanding produce



### DESCRIPTION

Not all copper fungicides are the same. **DEMILDEX<sup>®</sup>** has the following remarkable qualities.

- Only high quality ingredients go into **DEMILDEX<sup>®</sup>**. Thus it has very high purity.
- It has very low levels of Copper joiners (Heavy metals impurities such as Lead). It averages 73 ppm lead level, well below the International standard of 250 ppm. Thus superior quality for environmental and health reasons.
- It has less of the undesirable Copper chloride. This is undesirable because of its phytotoxic effects on plants. It leads to burning of the leaves or blemishes on the fruit. Because of the extra long oxygenation time with **DEMILDEX<sup>®</sup>** production process, this product has minimal (0.05% to 0.09%) copper chloride levels. Other brands have tested high as 2%. Low Copper chloride content in **DEMILDEX<sup>®</sup>** is important consideration for all crops, especially the more sensitive crops such as tomatoes..
- Has a better coverage for superior disease control. The smaller the particles the greater the number of particles- or active sites – per unit and hence the greater the fungicidal or bacterial activity. **DEMILDEX<sup>®</sup>** has very small particles (1.58 micron) compared with other brands (over 3 microns) hence a very big area (10 times) of active (fungicidal) surface
- **DEMILDEX<sup>®</sup>** sticks to the plant better. For fungicides, the tenacity coefficient is a measure of the product's ability to stick to the plant and hence gives a strong guide to its resistance to weathering from rainfall or overhead irrigation. The tenacity coefficient increases with decrease in particle size. Ultra fine **DEMILDEX<sup>®</sup>** sticks extremely well to plant
- High suspensibility ensures **DEMILDEX<sup>®</sup>** is kept in maximum suspension in the spray solution and eliminates deposits being left in the tank
- No nozzle blockages when used as directed
- **DEMILDEX<sup>®</sup>** has been especially formulated as a wettable powder with excellent flow characteristics to minimize dust and operators exposure

### Other benefits **DEMILDEX<sup>®</sup>**

- Is not broken down by sunlight to remain active on the plant surface
- Is non corrosive when used as directed
- Non abrasive. A function of the smallness of the particle size and the nature of the product
- Conveniently packaged in 1 to 25kg bags.

### USES

For control of Downy mildew, Coffee leaf rust Bacterial canker, Fruit spot, Bacterial rot (bulb onions, garlic, salad onion and leeks), Black rot in Cruciferous, Blight in potatoes and tomatoes, Collar rot in temperate fruits, Foot rot in tomatoes.

Use 80gms per 20Lts of water.

### Mode of Action

The fungicidal/ bacterial properties of **DEMILDEX<sup>®</sup>** is based on copper (the active ingredient) which is slowly dissolved in moisture (rain or irrigation) on the plants leaf in the presence of weak organic acids. As plant infections take place during rain, small amount of copper are released on the plant surface to kill or inhibit germination of micro-organisms.

**DEMILDEX<sup>®</sup>** is a protectant fungicide / bactericide which prevent infection on plants. Its mode of action is by interfering with the enzyme system of spores and mycelium, a process which is usually irreversible. It forms a chemical barrier against fungal attack. It does not have any systemic fungicidal value

### DOSAGE

The fine texture and quality of **DEMILDEX<sup>®</sup>** means this product can be used at lower rate (For coffee 4.4kg/ha) than the average copper oxychloride (5.5kg/ha). **DEMILDEX<sup>®</sup>** label rates are similar to the hydroxide products making **DEMILDEX<sup>®</sup>** very attractive on comparative basis

# Biothane® 80WP

Contains Mancozeb 80%w/w



This is a broad spectrum contact fungicide for the control of diseases on fruits, vegetables and ornamentals.

Biothane 80WP is preventative and therefore it should be applied before the appearance of the disease. Spray to ensure complete coverage of the plant. Use 2kg of Biothane 80WP in 800 litres of water per hectare. Mix 50g of Biothane 80WP in 20litres of water for small applications.

Crop	Disease	Mls / 20Lts of water	Rate / Ha
Tomato / Potatoes	Early/Late blight Anthracnose, Leaf spot	50gm	2kg
Bean	Rust	50gm	2kg
Cabbage Chinese Mustard Cauliflower	Gray leaf spot Anthracnose Leaf spot Downey mildew	50gm	2kg
Cucumber Watermelon	Stem blight Anthracnose Downey mildew	50gm	2kg
Roses	Downy Mildew Botrytis	50gm	2kg
Carnations	Botrytis	50gm	2kg

Pre-harvest period: Do not harvest at least 14 days after spraying

Packing: 50g, 100g, 200g, 500g, 1kg, 2kg, 25kg

## FUNGICIDES

# SPEAR 325 SC

**Azoxystrobin 200g/l + Difenconazole 125g/l**

### DESCRIPTION:

SPEAR 325 SC is a highly effective protective and curative fungicide for control of botrytis and downy mildew in roses; rust and ringspots on carnations; Rust, anthracnose and angular leaf spot in French beans.

### MODE OF ACTION:

SPEAR 325 SC acts by inhibiting spore germination and early stages of fungal development. It is also active against post-germination stages of the life cycle of most fungi.

### APPLICATION RATES

Crop	Diseases	Rate
Roses	Downy mildew, Botrytis,	250 - 400 ml/ha 8ml in 20Lt water
Carnations	Rust and spots	
French Beans	Rust, anthracnose and	
Coffee	angular leaf spot	

**Available:** 50ml, 100ml, 250ml, 500ml, 1Lt

**PRE-HARVEST INTERVAL:** 14 days in French beans

**RE-ENTRY PERIOD:** 24 hours.

**APPLICATION METHOD:** SPEAR 325 SC is foliar applied by spraying using 1000 liters of spray mixture per hectare.

**APPLICATION TIMING:** to achieve efficient control, SPEAR 325 SC should be applied at the onset of disease. Repeat after 10 days and use upto a maximum of 3 times per season.

**PREPARATION OF SPRAY MIXTURE:** Fill spray tank with half the amount of required water. Add required amount of SPEAR 325 SC and fill the water to the required level. Agitate to ensure thorough mixing.



SPEAR 325 SC® and Bio-Medica® are registered trademark of Bio-Medica Laboratories.

# FLYEE 72 WP®

**Mancozeb 640g/kg + Cymoxanil 80g/kg**

### DESCRIPTION:

Flyee 72% WP is a contact and systemic fungicide for control and curing of downy mildew on roses and early and late blights on tomato and potato, anthracnose and ascochyta in beans & peas. It has protective action with a good long-lasting effect of about 15 days.

**MODE OF ACTION:** Flyee 72% WP has contact and systemic action.

### APPLICATION RATES

Crop	Disease	Rate/Ha	Rate/20Lt of water
Roses	downy mildew	2 kg in 400-1000lt water per Ha.	40gm
Potato & Tomato	Early & Late Blight	2 kg in 400-1000lt water per Ha.	40gm
French Beans	Anthrachnose, + Ascochyta	2 kg in 400-1000lt water per Ha.	40gm

**Available:** 50gm, 100gm, 200gm, 500gm, 1kg, 2kg, 5kg

**PRE HARVEST INTERVAL:** 14 days for tomato and potato

**RE-ENTRY PERIOD:** Do not enter treated areas unless the spray deposits on crops have dried.

**APPLICATION TIMING:** Flyee 72% WP can be used during all the vegetative periods of the crops 3 times. It is applied before or after infection, at 10 day intervals

**PREPARATION OF SPRAY MIXTURE:** Fill spray tank with half the amount of required water. Add required amount of Flyee 72% WP and fill the water to the required level. Agitate to ensure thorough mixing.



FLYEE 72% WP® and Bio-Medica® are registered trademark of Bio-Medica Laboratories.



## INSECTICIDES

# DeAcarid® 1.8EC

**ABAMECTIN 1.8%W/V**

**DeAcarid 1.8EC** is a naturally derived broad spectrum miticide and insecticide used in the control of mites and insects on coffee, fruits, vegetables and ornamentals.

**DeAcarid 1.8EC** may be mixed with other pesticides but it is advisable to conduct pre-mixing compatibility tests.

**Timing:** Spray at first signs of infestation

**Mixing:** Ensure your spray equipment is clean. Calculate the amount of **DeAcarid 1.8EC** needed. Fill the spray tank with half the amount of water required. Add the **DeAcarid 1.8EC** and agitate vigorously. Top up with the remaining amount of water as you agitate. Do not add wetters and spreaders to the **DeAcarid 1.8EC** spray solution

**Spray volume:** Vegetables - 500Lts/hectare.

Flowers & Other crops 1000 Lts/ hectare.

**PRE-HARVEST PERIOD:** Do not apply within 3 days of harvest



**Abamectin 1.8%**

Crop	Pest	Rate (ml/20Lts Water)
Flowers/ Ornamentals	Mites, leafminers	5
Citrus	Mites, leafminers, thrips	5
Cucumbers	Spinder mites, leafminers	5
Tomatoes	Mites, leafminers	5
Kales	Diamond blackmoth, aphids, whiteflies, mites	5
Celery	Mites	5
Head lettuce	Liriomyza leafminers	5
Potatoes	Mites / Leafminers	5

**PACKING:** 50ml, 100ml, 250ml

DeAcarid® and BIO-MEDICA® are registered trademarks of Bio-Medica Laboratories Limited

# ALPHAMED 100EC

**Alphacypermethrin 100g/l**

**DESCRIPTION:** **ALPHAMED 100 EC** Is an Insecticide for control of thrips, white-flies, aphids, leaf miner and caterpillar on roses, brassicas, tomato, potato, French beans, coffee and other horticultural crops.

**MODE OF ACTION:** **ALPHAMED 100 EC** acts by disrupting the nervous system of the insect pest hence causing paralysis or death.

**APPLICATION METHOD:** **ALPHAMED 100 EC** should be applied as foliar spray.

**APPLICATION TIMING:** Start applying when target pest reaches the economic threshold. Do not spray on windy days or before rain. Repeat after 7 days and twice at most for one season.

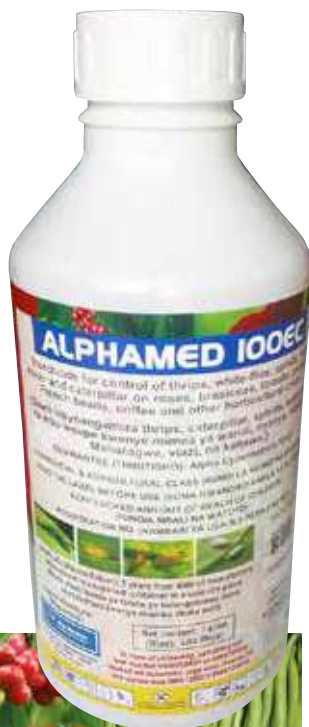
#### APPLICATION RATES

Crop	Pests	Rate/Ha	Rate/20Lt
Roses	Whiteflies, thrips, caterpillar	500ml	10ml
Brassicas	Whiteflies, thrips, aphids, leafminer, caterpillar	500ml	10ml
Tomato/Potato	Whiteflies, thrips, aphids, leafminer, caterpillar	500ml	10ml
French Beans	Whiteflies, thrips, aphids, leafminer, caterpillar	500ml	10ml
Coffee	Thrips, scales	500ml	10ml

**Pre-Harvest interval:** 7 days

**Available:** 50ml, 100ml, 250ml, 500ml, 1Lt, 5lts

**PREPARATION OF SPRAY MIXTURE:** Fill spray tank with half the amount of required water. Add required amount of **ALPHAMED 100 EC** and fill the water to the required level. Agitate to ensure thorough mixing. Use the spray mixture on the same day of preparation.



ALPHAMED 100EC® and Bio-Medica® are registered trademark of Bio-Medica Laboratories.



## INSECTICIDES

# RUBIPRID 200 SP<sup>®</sup>

**Acetamirid 200g/kg**

**DESCRIPTION:** RUBIPRID 200 SP is a highly effective, systemic insecticide with high residual effect, for control of aphids, thrips, leaf miner and whitefly in roses, french beans, tomato, potato and coffee.

**MODE OF ACTION:** RUBIPRID 200 SP has contact and stomach poison action. It interferes with the nerve transmission system of insects.

### APPLICATION RATES

Crop	Pests	Rate
Roses	Aphids, Thrips, Leafminer, Whiteflies, Caterpillar	3gm in 20Lts of water (150-200g/ha)
French Beans	Aphids, Thrips, Leafminer, Whiteflies, Caterpillar	3gm in 20Lts of water (150-200g/ha)
Tomato	Aphids, Thrips, Leafminer, Whiteflies, Caterpillar	3gm in 20Lts of water (150-200g/ha)
Potato	Aphids, Thrips, Leafminer, Whiteflies, Caterpillar	3gm in 20Lts of water (150-200g/ha)
Coffee	Thrips, Scales, Aphids	3gm in 20Lts of water (150-200g/ha)

**Available:** 15gm, 30gm, 120gm, 240gm, 500gm, 2kg, 5kg

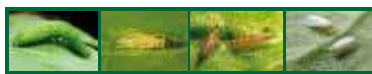
**PRE HARVEST INTERVAL:** 7 days

**APPLICATION TIMING:** Apply when insects first appear on crop and repeat every 7 days or as necessary based on regular scouting.

**PREPARATION OF SPRAY MIXTURE:** Fill spray tank with half the amount of required water. Add required amount of RUBIPRID 200 SP and fill the water to the required level. Agitate to ensure thorough mixing.

**APPLICATION TECHNIQUE:** RUBIPRID 200 SP is foliar applied. Apply using at least 200 litres of water per hectare Ensure adequate coverage of the crop foliage for best results.

**RE-ENTRY PERIOD:** Do not enter treated areas during the restricted-entry interval of 12hours



RUBIPRID 200 SP<sup>®</sup> and Bio-Medica<sup>®</sup> are registered trademark of Bio-Medica Laboratories.

# DUALIS 2EC<sup>®</sup>

**Lambda-cyhalothrin 16g/l + Abamectin 4g/l**

### DESCRIPTION:

Dualis 2EC is an Insecticide for control of aphids, beetles, spider-mites, thrips, caterpillars & leaf-miners on roses, tomato, potato, beans & peas.

### APPLICATION RATES

Crop	Disease	Rate
Roses, Tomato, Potato,	aphids, beetles, spider-mites, thrips,	350ml/Ha
Coffee, French beans	scales, caterpillars & leaf-miners	7ml/20Lts water

**Available:** 50ml, 100ml, 250ml, 500ml, 1Lt, 5lts, 20Lts

**RE-ENTRY PERIOD:** Do not enter treated areas unless the spray deposits on crops have dried or after 12 hours.

**APPLICATION TIMING:** Start using Dualis 2EC when the first signs of insect pests are noticed and before crop damage occurs using 400 lts of water/Ha. Repeat after 10 days if infestation continues.

**PREPARATION OF SPRAY MIXTURE:** Fill spray tank with half the amount of required water. Add required amount of Dualis 2EC and fill the water to the required level. Agitate to ensure thorough mixing.

DUALIS 2EC<sup>®</sup> and Bio-Medica<sup>®</sup> are registered trademark of Bio-Medica Laboratories.



# Agri.Green

TOTAL • HIGH N • HIGH K • HIGH P

## Water soluble crystalline fertilizers

Agri-Green is a range of fully water-soluble NPK fertilizers manufactured in Italy., that provide complete nutrition scheme that meets the dynamic needs of the throughout the growth season

### Why chose Agri-Green range of fertilizer as foliar spray or for fertigation?

- Fully water soluble
- Made of high quality ingredients
- Consists of pure plant nutrients exclusively
- Good handling and storage properties, due to the Granular Matrix Technology
- Available in a wide range of formulae
- Granular Matrix Technology



## Agri-Green Total 20:20:20

Balance formula • Stimulates productive-vegetal development. **RATES**

APPLICATION	APPLICATION		REMARKS
	100L	20L	
Field and Vegetable crops: Beans, Brassicae, Maize, Peas, Potatoes, Cucurbits	250gm	50gm	Apply soon after germination to stimulate development of strong rooting system for efficient nutrient and water uptake
Tomatoes	250gm	50gm	Apply during fruit development stage
Fruit Tree	250gm	50gm	Apply during fruit development stage
Coffee	250gm	50gm	Apply during berry formation
Roses and other ornamentals	250gm		Apply for general plant growth boost
Fertigation	1-2gms per litre of irrigation water		

# FERTILIZERS

## Agri-Green High N 30:10:10

Stimulates Vegetative growth **RATES**

APPLICATION	APPLICATION		REMARKS
	100L	20L	
Field and Vegetable crops: Beans, Brassicae, Maize, Peas	250gm	50gm	Suited for balanced soils for general nutritional needs during vegetative and fruit development phases.
Cereals	250gm	50gm	Apply at 5-6 leaf stage or at tillering stage
Tomatoes	250gm	50gm	Apply before flowering
Fertigation	1-2gms per litre of irrigation water		

## Agri-Green High P 10:50:10

Rich in assimilable phosphorus **RATES**

APPLICATION	APPLICATION		REMARKS
	100L	20L	
Field and Vegetable crops: Beans, Brassicae, Maize, Peas, Onions, Strawberries	250gm	50gm	Apply soon after germination to stimulate development of strong rooting system for efficient nutrient and water uptake.
Cereals	250gm	50gm	Apply soon after germination to stimulate development of strong rooting system for efficient nutrient and water uptake.
Tomatoes, Capsicum, Brassicas	250gm	50gm	Apply after transplanting to stimulate strong roots development
Fruit Crops	250gm	50gm	Apply before start of flowering
Coffee	250gm	50gm	Apply after pruning
Roses and other ornamentals	250gm		Apply after bud break, bending or collusing
Fertigation	1-2gms per litre of irrigation water		

## Agri-Green High K 15:15:30

Improves on production quality **RATES**

APPLICATION	APPLICATION		REMARKS
	100L	20L	
Field and Vegetable crops requiring high K: Beans and Peas	250gm	50gm	Apply during fruiting phase. This will improve fruit formation and ripening. It improves produce quality e.g. during pod formation.
Tomatoes, Cucurbits, Capsicum	250gm	50gm	Apply during fruit ripening
Fruit Trees	250gm	50gm	Apply during fruit development stage
Coffee	250gm	50gm	Apply during berry ripening stage
Roses and other ornamentals	250gm		Apply to boost colour intensity
Fertigation	1-2gms per litre of irrigation water		



# FERTILIZERS



Ultra fine particles for better assimilation No caking in chill weather  
Water soluble suspension which does not crystallize

**GROFLOW FOLIAR** is recommended for use during plant growth periods that require relatively high Nitrogen levels

**GROFLOW FOLIAR** is a completely water soluble fertilizer and is chlorine free.

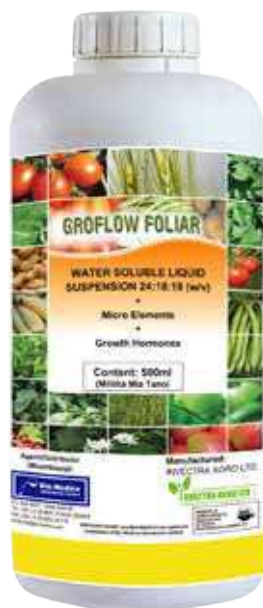
**GROFLOW FOLIAR** is readily taken up by the plant as it is formulated as both a foliar feed and for fertigation.

**GROFLOW FOLIAR** contains amino acids AND Growth Hormones.

**GROFLOW FOLIAR** is compatible with most agricultural remedies. It is however advisable to do a miscibility test prior to mixing with other chemicals.

The rate of application is dependent on the soil fertility and reaction required.

The lower rates should be used for maintenance while the higher rates will correct nutritional deficiencies.



APPLICATION	RATE PER HECTARE	REMARKS	APPLICATION ml PER 100 LITRE WATER
Field and Vegetable crops: Beans, Brassicae, Canola, Cereals, Celery, Cotton, Cucurbits, Garlic, Groundnuts, Lettuce, Maize, Onions, Peas, Peppers, Potatoes, Soybeans, Strawberries, Sweetcorn, Tobacco, Tomatoes, Wheat, Coffee	1Ltr  1 - 3Ltrs	Apply as a full cover spray using ground rig or knapsack Application. Apply at 1 to 2 week intervals until the start of flowering  Aerial Application. Apply at 1 to 2 week intervals as required until the start of flowering.	100 ML  100-200 ML
Ornamental crops, roses and carnation	1 - 3Ltrs	Apply as a full cover spray every 7 – 14 days until the start of flowering.	50-100 ML
Nurseries trees	1Ltr		50-100 ML
Fertigation	1 - 10Ltrs	Use lower concentrations for seedlings and increase the rate as the plants mature. Use during periods that require a high nitrogen level.	0.25 - 2 ML
<b>Packing: 200ml, 500ml, 1lt, 5lt, 10lt, 20lt</b>			

**GROFLOW FOLIAR** should preferably be applied in the early morning or late afternoon. Do not apply to plants that are undergoing a period of moisture or heat stress. Consult with the distributor should crop specific programs or more information be required around the use of the **GROFLOW FOLIAR** range of fertilizers.

## Active ingredients:

Nitrogen (N) 244 g / l, Phosphorus (P 2O5) 170 g / l, Potassium (K2O) 176 g / l, Sulfur (S) 13 g / l, Zinc (Zn)\* 755 m g / l, Iron (Fe)\* 750 m g / l, Manganese (Mn)\* 308 m g / l, Copper (Cu)\* 311 m g / l, Boron (B) 1 500 m g / l Molybdenum (Mo) 80 m g / l

## Also contains:

Cytokinins 2 m g / l, Auxins 0,6 m g / l, Amino Acids 12 m g / l

• EDTA chelated SG = 1.5

• **GROFLOW FOLIAR** has 25% more trace elements + growth hormones thus a superior quality foliar fertilizer for use on all crops.

## FERTILIZERS

# ZINC-B

### A Zinc/Boron liquid fertilizer

#### Description

A liquid Fertilizer for the correction of zinc and Boron deficiency in coffee, macademia fruits, cereals and vegetable crops. For foliar application only.

#### Direction for use

Shake the container thoroughly before use. Pour through the to filter into the tank 3/4 filled with water whilst agitating. Top up with water and continue to agitate until spraying is completed.



#### Foliar Dose Rates and Timings

Crop	Recommendations	Mls in 20Lts of water	Water Rate Lts
Coffee	1-2 applications on well established crop or before and after flowering	20	200 Lts
Macadamia	1-2 applications on well established crop or before and after flowering	20	200 Lts
Wheat/Barley	0.5 to 1Lt/Ha from 2 leaf state to 1st node detectable	20	200 Lts
Maize/Corn	1Lt/Ha at 6-8 leaf stage	20	200 Lts
Peers/Apples/ Pineapple	1Lt/Ha at bud burst. Apply again after harvest but before leaf serescence.	20	500 Lts to 1000 Lts
Carrots	1Lt/Ha when crop is 15cm tall. Repeat 14 days interval for severe deficiency	20	200 Lts
Cucurbits (field grown)	1Lt/Ha at the 2nd - 4th leaf stage. Repeat 14 days interval if necessary	20	200 Lts
Potatoes	1Lt/Ha one week after 100% emergence. Apply at 14 days interval	20	200 Lts
Tomatoes (field grown)	1Lt/Ha when plants are at 4-6 leaf stage	20	200 Lts
Onions	1Lt/Ha when sufficient leaf area is intercept spray	20	200 Lts
Dry Beans	0.5 to 1Lt/Ha when crop is 5-15cm tall	20	200 Lts
Soil Application (All crops)	3 - 10Lt/Ha applied pre-planting or pre-emergence	20	50 Lts/Ha Minimum

**Re-Entry period:** 1 hr.

**Pre-Harvest interval:** 3 days.

#### Compatibility

Bio-Medica Products are physically compatible with many agro chemicals. Contact your Bio-Medica technical representative for information.

ZINC-B® and Bio-Medica® are registered trademark of Bio-Medica Laboratories.

## FERTILIZERS

# BIOBOOM

## Multipurpose 14:10:8+ TE

### Liquid foliar fertilizer



### Description

**BIOBOOM®** is a complete balanced Fertilizer containing all the major and minor elements essential for optimal yields and healthy plants growth. It has growth regulators and amino acids.

**BIOBOOM®** is fast acting and is specially formulated for rapid absorption through the leaves.

### Direction for use

Apply **BIOBOOM®** during the period of vegetative growth of the crop. It can be applied up to 4 times during the growing season.

### Table (Rates of Application)

Crop	Qty / 20Lt water (mls)	Qty / Acre (Lts)	Repeat spray (Days)
Maize	50	0.8	21
Vegetables	50	0.8	14
Coffee	60	1	14
Wheat / Barley	80	1	21
Flowers	70	1	14
Potatoes	80	1	14
Tomatoes	60	1	14
Beans	80	1	14
Tea	60	1	21
Fruit trees	80	1	21
Pineapples	80	1	21

**Compatibility:** **BIOBOOM®** is compatible with all pesticides apart from lime and other alkaline products.

**Precautions:** wash hands and exposed skin after handling. Keep away from children, food, feeds and animals.

**Disposal:** Do not re-use empty containers. Puncture and burn.

**Environmental Hazards:** **BIOBOOM®** is relatively safe to environment. However, do not spray into waterways or throw containers into rivers.

**Warranty:** Sellers' guarantee is limited to the terms set out on the labels subject to thereto, the buyers assumes risk to persons or property arising from use or handling of this product and accept the product on that condition.,





## GROWTH ENHANCERS



# RHIZOCELL®

**Probiotic effect due to occupation of the rhizosphere.**

**Starter effect (root stimulation – phosphorus solubilization).**

### SYMBIOTIC RELATIONSHIP

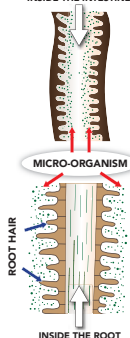
Bacteria establishes itself in the rhizosphere (zone near the roots) and feeds on root exudates.

In return, it stimulates root growth by secreting growth metabolites and solubilizes phosphorus by secreting phytases (enzymes). Use 100gm in 20lts of water.



ROOTS ARE INTESTINE UPSIDE

INSIDE THE INTESTINE



### PROBIOTIC EFFECT

The probiotic effect, in contrast with use of antibiotics, consists of utilization of beneficial micro-organisms, which limit potentially pathogenic populations.

**Trial on strawberries - EARL MARTIN-SEIGLIERES (26) – 2011**

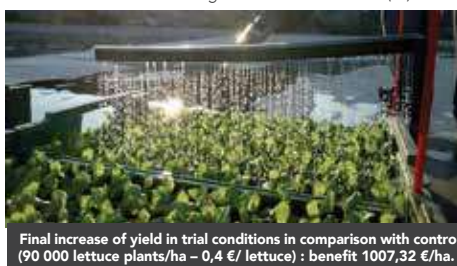


Without RHIZOCELL



With RHIZOCELL

- Planète Légumes – ID3A à BALGAU (68) – 2010



Final increase of yield in trial conditions in comparison with control (90 000 lettuce plants/ha – 0,4 €/ lettuce) : benefit 1007,32 €/ha.



LALLEMAND PLANT CARE

RHIZOCELL® and Bio-Medica® are registered trademark of Bio-Medica Laboratories.



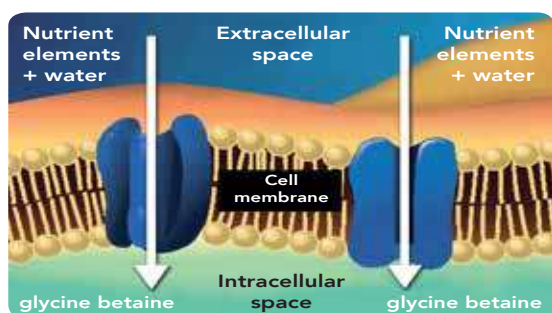
# GREENSTIM®

*Calcium mobilization Fruit cracking  
Post-harvest quality and firmness*

## OSMOTIC REGULATION

Glycine betaine enables the retention and the diffusion of water and nutrient elements through the cell membrane by maintaining the osmotic pressure of the plant cells.

This efficient osmoprotectant is naturally derived and utilised by plant species that are the most resistant to extreme conditions. Use 100gm in 20lts of water.



Contents of calcium and nutrient elements in fruits

	Ca mg/kg	Mg mg/kg	Fe mg/kg	Cu mg/kg	Zn mg/kg	Mn mg/kg
GREENSTIM® + Calcium Nitrate	64.96	74.1	1.4	0.9	0.6	0.1
Calcium Nitrate	40.78	58.7	0.9	0.4	0.6	0.0

(Peaches) – GIE Vergers de l'Hermitage - 2010.

Percentage of fruits with symptoms of mold during storage

	Treated		Control	
	C3	C6	C3	C6
Total	0	3	3	6
Average	0	7%	25%	50%

C3 = 3 days after harvesting, C6 = 6 days after harvesting

# MEGA-GRO G/A®

## Description:

**MEGA-GRO G/A** is a plant growth regulator used in all crops to improve yields and quality.

## Direction for use:

For results, use 10gms of **MEGA-GRO G/A** in 100 lts of water per hectare.

**MEGA-GRO G/A** can be broken into 4 parts each dissolving in 20 lts of water.

It is recommended to spray **MEGA-GRO G/A** in cool weather.

**Note:** Different crops/cultivate react differently to **MEGA-GRO G/A** treatment.





# BIOMAN®

Capacity 20 Litres

## Bio Medica Range of Knapsack Sprayers

A manually operated knapsack sprayer that is economic, safe and efficient. Its structure and modeling is unique. It possesses characteristics of bearing comfortably, handling tightly and spraying evenly. It is suitable for use with insecticides, miticides, fungicides herbicides and foliar feeds. It is important to apply the recommended dosage and choose the right nozzles from the accompanying kit for uniform, efficient and lower chemical consumption during application. Always release the pressure and wash the sprayer with water after use.

### Advantages:

- It is made of plastic hence light and very effective
- Has a longer hose and the spray spindle can be extended to a longer spray region
- The chosen materials are resistant to acid, alkalinity and corrosion hence very durable
- Has various spray heads that can be fitted for different tasks to achieve fine spray and sprinkle effects



## FERTILIZERS

# ZincFlo Zn 70

Zinc 70% w/v

### Description

A liquid Fertilizer for the correction of zinc deficiency in coffee, fruits, cereals and vegetable crops. For foliar application only.

### Direction for use

Shake the container thoroughly before use. Pour through the to filter into the tank 3/4 filled with water whilst agitating. Top up with water and continue to agitate until spraying is completed.



### Foliar Dose Rates and Timings

Crop	Recommendations	Mls in 20Lts of water	Water Rate Lts
Wheat/Barley	0.5 to 1Lt/Ha from 2 leaf state to 1st node detectable	20	200 Lts
Maize/Corn	1Lt/Ha at 6-8 leaf stage	20	200 Lts
Peers/Apples/ Pineapple	1Lt/Ha at bud burst. Apply again after harvest but before leaf serescence.	20	500 Lts to 1000 Lts
Carrots	1Lt/Ha when crop is 15cm tall. Repeat 14 days interval for severe deficiency	20	200 Lts
Cucurbits (field grown)	1Lt/Ha at the 2nd - 4th leaf stage. Repeat 14 days interval if necessary	20	200 Lts
Potatoes	1Lt/Ha one week after 100% emergence. Apply at 14 days interval	20	200 Lts
Tomatoes (field grown)	1Lt/Ha when plants are at 4-6 leaf stage	20	200 Lts
Onions	1Lt/Ha when sufficient leaf area is intercept spray	20	200 Lts
Dry Beans	0.5 to 1Lt/Ha when crop is 5-15cm tall	20	200 Lts
Soil Application (All crops)	3 - 10Lt/Ha applied pre-planting or pre-emergence	20	50 Lts/Ha Minimum
Coffee	1 - 2L/Ha 1 to 2 application on well established crop or before and after flowering	20	200 Lts to 500 Lts/Ha

**Re-Entry period:** 6 hours

**Re-Harvest interval:** N/A

**Compatibility** - Bio-Medica Products are physically compatible with many agro chemicals. Contact your Bio-Medica technical representative for information.



P.O. Box 66627-00800 NAIROBI, Kenya • Tel: 2018540, 825466/8, 3518254,  
 Cell phone: 0727034566 • Fax: 3518253/823132  
 E-mail: [info@biomedica.co.ke](mailto:info@biomedica.co.ke)  
 BIO-MEDICA® is a registered trademark of  
 Bio-Medica Laboratories Limited

*In partnership with farmers*